

How to Access Your PC through ISE with an iPad, iPhone, or iPod Touch

1. Install a Remote Desktop (RDP) application from the App Store.
2. Select 'Menu,' then 'New...' (see *Figure 1*).



Figure 1

3. Add your PC's IP address (see *Figure 2*).



Figure 2

4. Launch your RDP app. Select 'Connect' (see *Figure 3*).

SUBJECT: IT Help Desk**DATE:** June 1, 2018

NAME: How to Access Your PC through ISE with an iPad, iPhone, or iPod Touch**PAGE:** 2 of 4

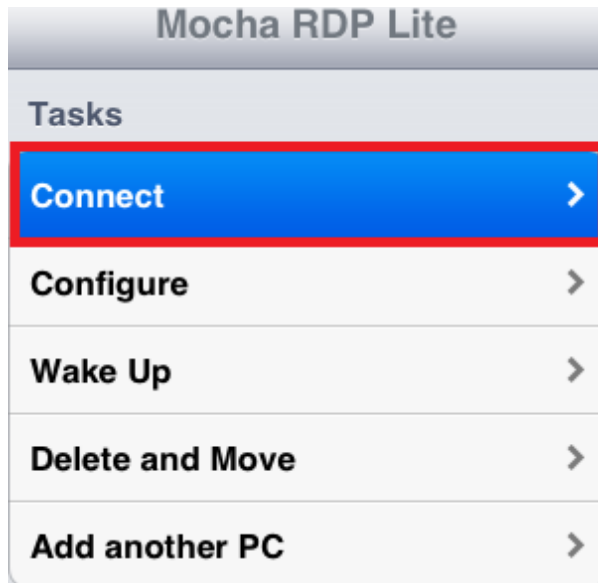


Figure 3

5. You should have access to your desktop. Log in (see *Figure 4*).

SUBJECT: IT Help Desk**DATE:** June 1, 2018

NAME: How to Access Your PC through ISE with an iPad, iPhone, or iPod Touch**PAGE:** 3 of 4

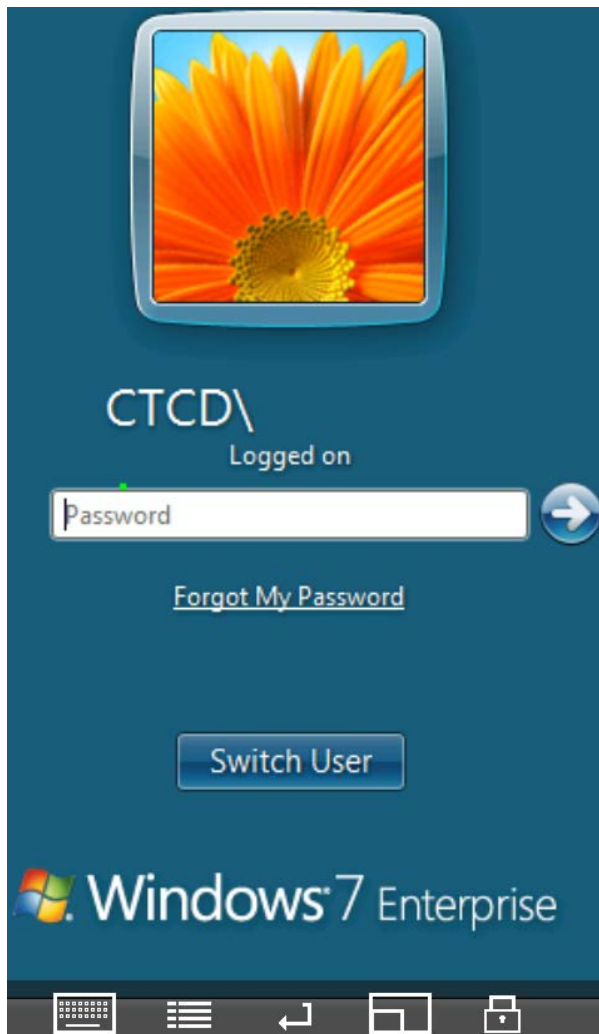


Figure 4

6. To disconnect, select the disconnect button. It is the second button at the bottom of your screen (see *Figure 5*).

SUBJECT: IT Help Desk

DATE: June 1, 2018

NAME: How to Access Your PC through ISE with an iPad, iPhone, or iPod Touch

PAGE: 4 of 4

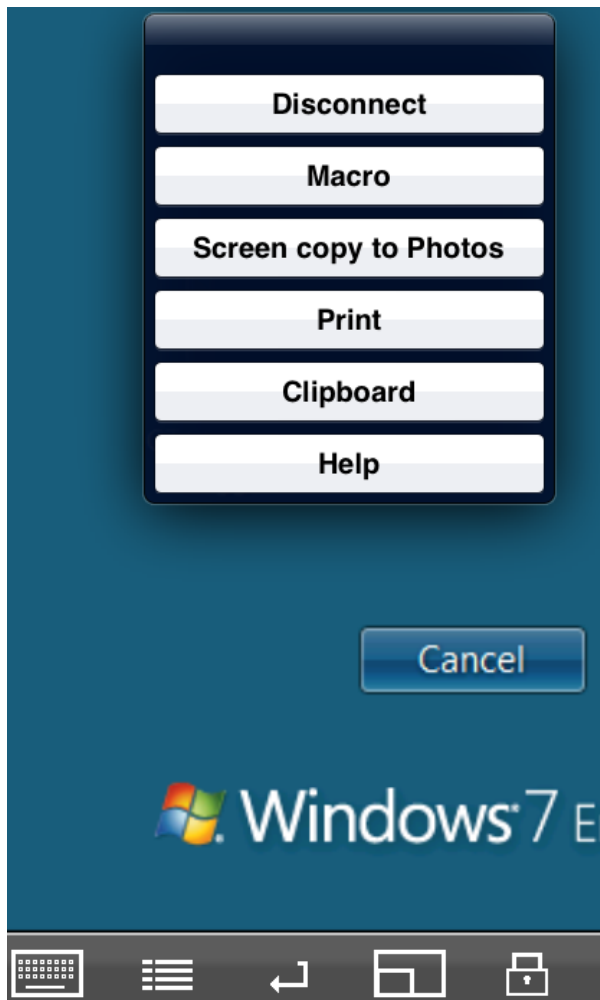


Figure 5