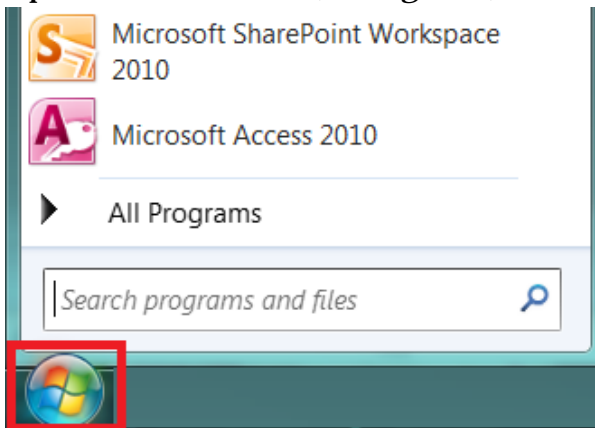


## How to Access Your Shared Folder or PC through ISE with Windows

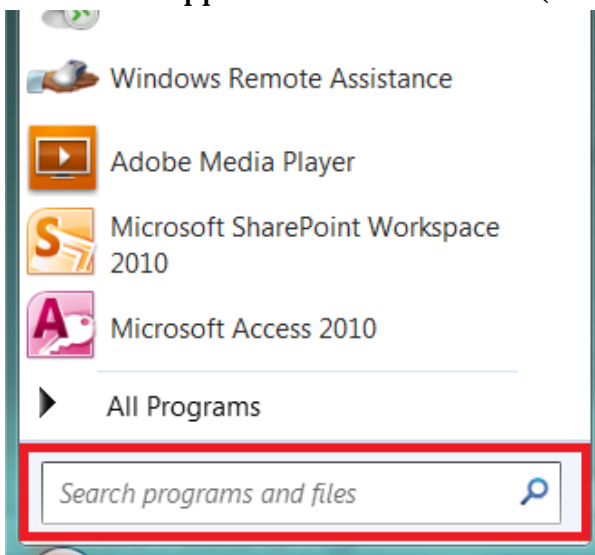
### To Connect to Shared Folders

1. Open the Start Menu (see *Figure 1*).



*Figure 1*

2. Insert \\ctcapp03 into the search bar (see *Figure 2*).



*Figure 2*

---

**SUBJECT:** IT Help Desk**DATE:** June 1, 2018

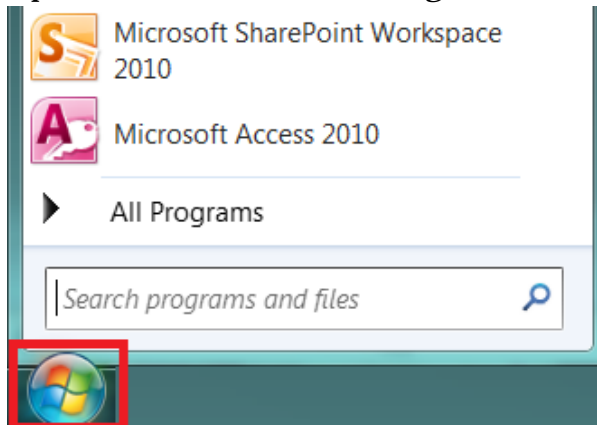
---

**NAME:** How to Access Your Shared Folder or PC through ISE with Windows**PAGE:** 2 of 5

---

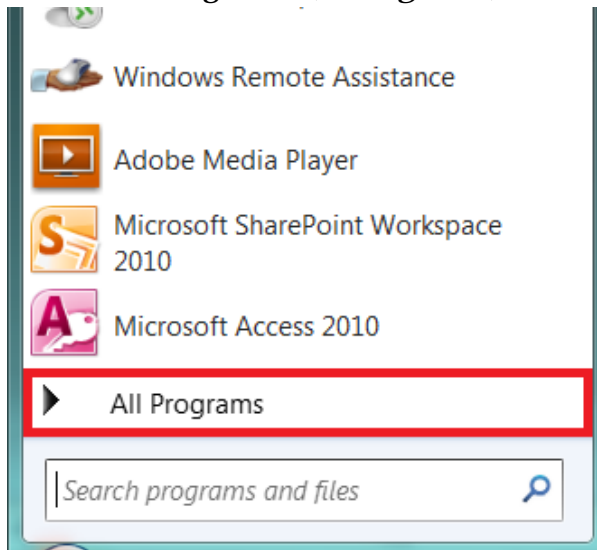
## To Connect to Your Desktop

1. Open the 'Start Menu' (see *Figure 1*).



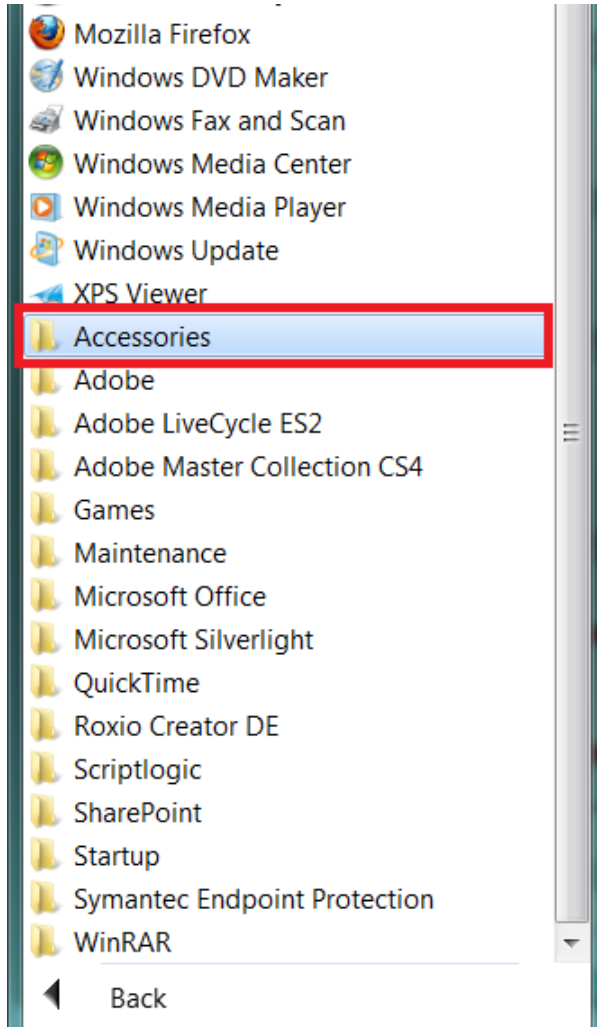
*Figure 1*

2. Select 'All Programs' (see *Figure 2*).



*Figure 2*

3. Click 'Accessories' (see *Figure 3*).



*Figure 3*

4. Select 'Remote Desktop Connection' (see *Figure 4*).

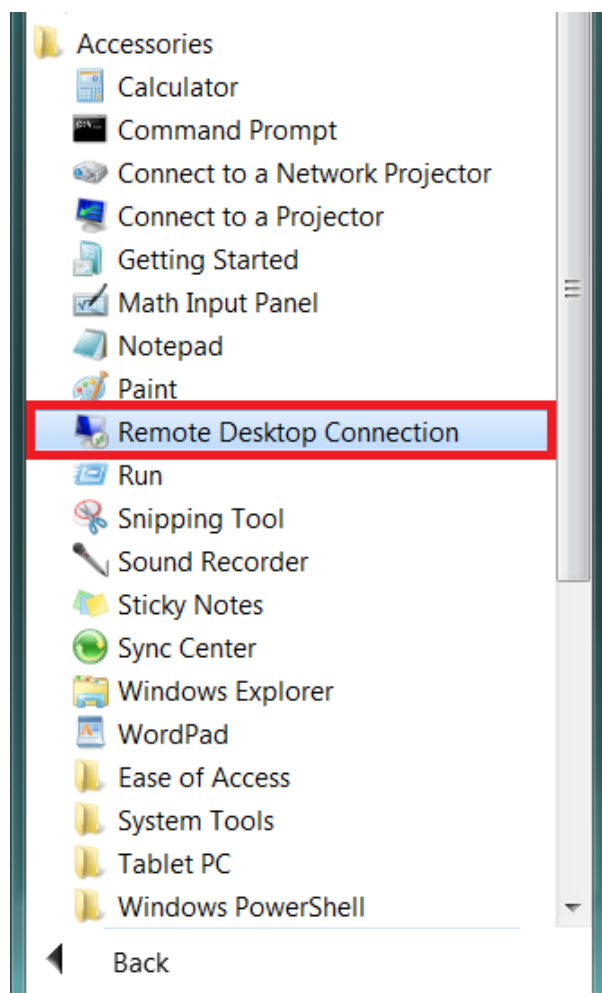
---

**SUBJECT:** IT Help Desk**DATE:** June 1, 2018

---

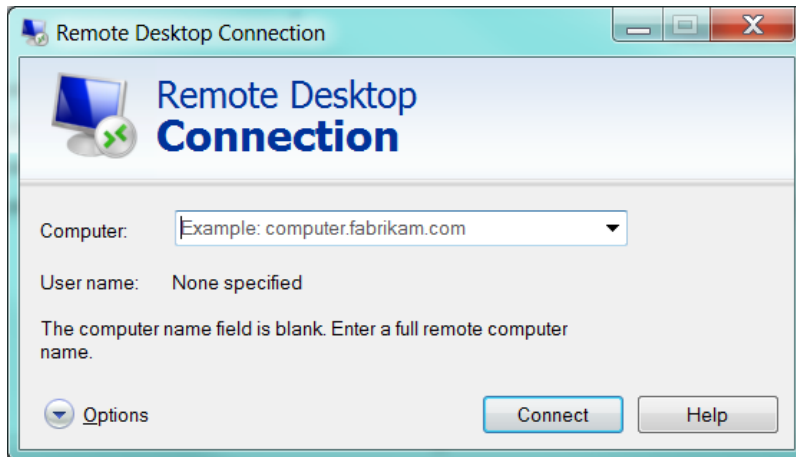
**NAME:** How to Access Your Shared Folder or PC through ISE with Windows**PAGE:** 4 of 5

---



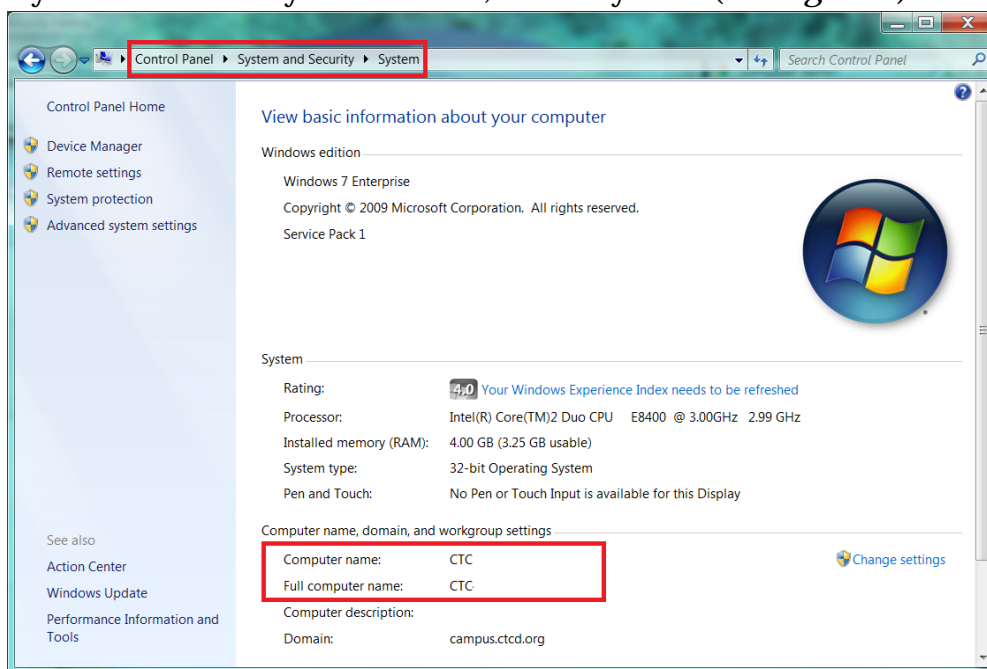
*Figure 4*

5. Add the name of the computer you want to access. Click 'Connect' (see *Figure 5*).

**SUBJECT:** IT Help Desk**DATE:** June 1, 2018**NAME:** How to Access Your Shared Folder or PC through ISE with Windows**PAGE:** 5 of 5

*Figure 5*

6. Your computer's name can be found by opening the 'Control Panel' and selecting 'System and Security.' From there, select 'System' (see *Figure 6*).



*Figure 6*