

How to Connect to ISE with Windows 7

To access the new faculty and staff wireless network, follow the listed instructions below.

1. Click the 'Network' icon located in your 'Task Bar' (see *Figure 1*).

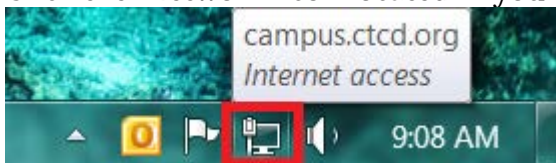


Figure 1

2. Select CTC_ISE on the list of networks and click 'Connect' (see *Figure 2*).

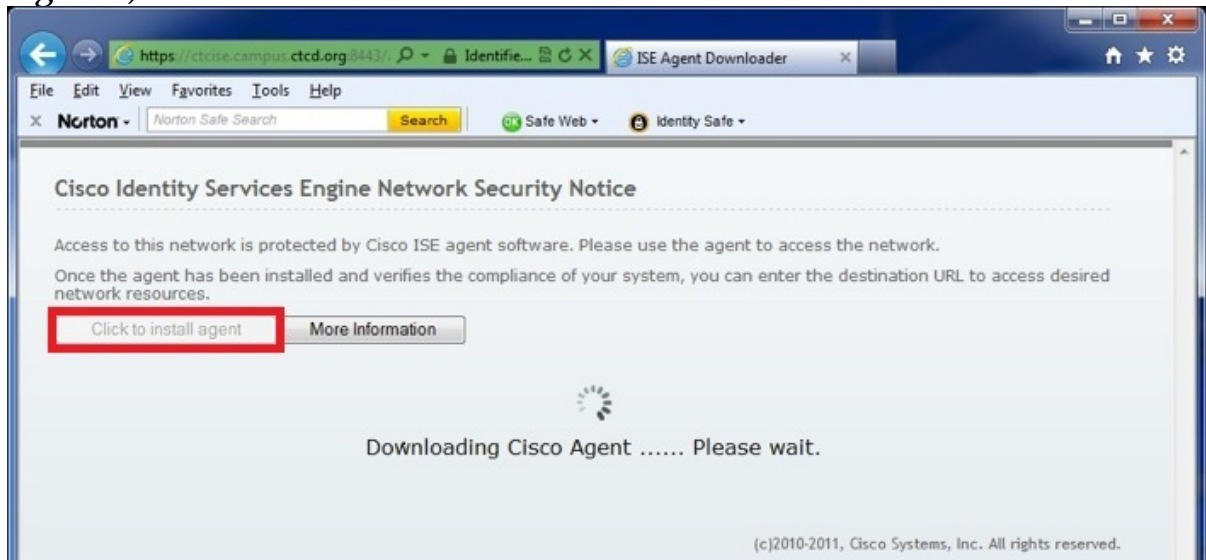


Figure 2

3. A prompt will ask for your Active Directory name (first name.last name@ctcd.edu or first initial.last name@ctcd.edu) and password. Contact the IT Help Desk if you need further assistance with your Active Directory credentials. Click 'OK' (see

SUBJECT: IT Help Desk**DATE:** June 1, 2018**NAME:** How to Connect to ISE with Windows 7**PAGE:** 2 of 4*Figure 3).**Figure 3*

4. Open a web browser of your choice. You will be redirected to the 'ISE Agent Downloader' page and asked to install a software agent that will make it possible for you to connect to the network. Click the 'Click to install agent' button (see *Figure 4*).

*Figure 4*

SUBJECT: IT Help Desk**DATE:** June 1, 2018

NAME: How to Connect to ISE with Windows 7**PAGE:** 3 of 4

5. A prompt will ask that you confirm this requested change. Click 'Yes' (see *Figure 5*)

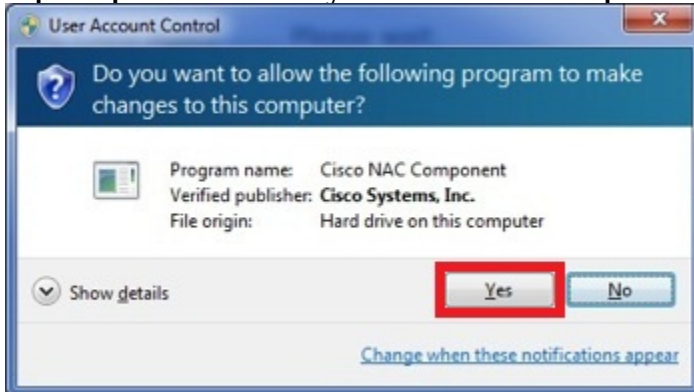
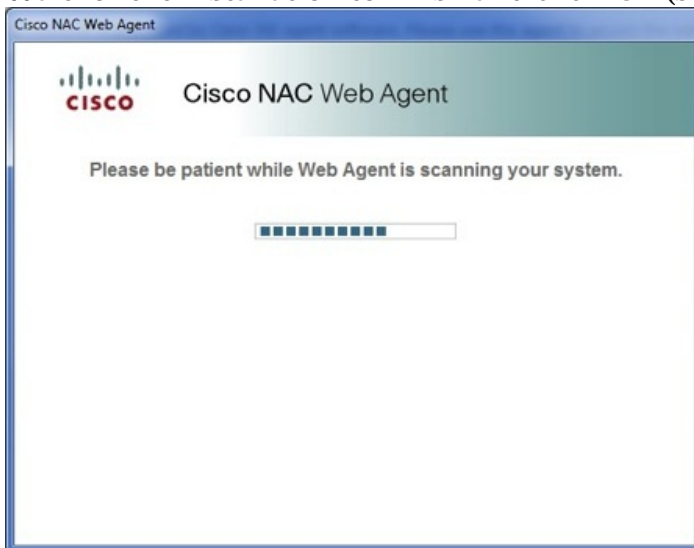


Figure 5

6. Wait for the installation to finish and click 'Ok' (see *Figure 6*).



SUBJECT: IT Help Desk

DATE: June 1, 2018

NAME: How to Connect to ISE with Windows 7

PAGE: 4 of 4



Figure 6